



## Duck® Marine Fresh Discs

CONCENTRATED GEL DISCS EFFORTLESSLY FRESHEN WITH EVERY FLUSH AND HELP PREVENT LIMESCALE.



### Product Description

Did you know that traditional toilet cleaner cages can harbour germs? Duck® Fresh Discs have a gel based formula that self-sticks to the toilet bowl so you don't need to handle germmy cages. Fresh Discs prevent the build up of limescale and stains<sup>1</sup>. Just stick it to the inside rim of the toilet bowl or urinal so you can keep things clean. Starter kit contains handle and 6 gel discs and there's also a dual refill that includes 12 gel discs.

### Features & Benefits:

- Concentrated gel to fight limescale<sup>2</sup>
- Formula leaves a flush-activated protective shield all around the bowl that helps repel limescale
- With a marine scent that gives 24/7 freshness to the whole room, not just the bowl<sup>3</sup>
- Tube of 6 lasts up to 630 flushes<sup>4,5</sup>
- Refill pack of 12 discs gives up to 15 weeks of long-lasting freshness<sup>4,5</sup>
- Use with Duck Biodegradable Toilet Gel to extend the just cleaned freshness

<sup>1</sup> Inorganic stains such as hard water and limescale (tartar)

<sup>2</sup> Formula leaves a flush-activated protective shield all around the bowl that helps repel limescale

<sup>3</sup> With regular toilet use

<sup>4</sup> Utilize Length of Life Table for days/weeks/flushes by country

<sup>5</sup> Based on 12 flushes per day

### Where to Use



Toilets



Urinals

# Duck® Marine Fresh Discs

CONCENTRATED GEL DISCS EFFORTLESSLY FRESHEN WITH EVERY FLUSH AND HELP PREVENT LIMESCALE.

## Instructions for Use

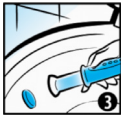
### Ensure the toilet is clean



1. SNAP. Align large button on gel holder with holes on handle. Remove cap and keep it.



2. POSITION. Position clear end of gel holder against inside surface of bowl, where water will flow when flushed.



3. DISPENSE. Press and hold button whilst pushing dispenser against bowl until button clicks. Do not twist.



4. Pull dispenser straight back to leave a gel disc. Finally CLOSE CAP tightly. Flush toilet to activate gel disc.

After dispensing the last gel disc, twist the gel holder slightly and remove from dispenser. Keep handle for refill.

**Contains:**  
< 5% Anionic surfactants, >15% - < 30% non-ionic surfactants, perfume, CITRAL, GERANIOL.

**Shelf Life:** 2 years

## Safety Information

This product meets the current national regulations for detergent products

### SAFETY DATA SHEETS

For Safety, Environmental, Handling, First Aid and Disposal information please refer to the Safety Data Sheet which can be downloaded from <https://www.scjp.com/en-gb/safety-data-sheets>

**Please refer to label or SDS sheet for safety information**



## Technical Data

Physical State	Gel
Colour	Blue
Odour	Marine
pH Value	5 - 6 at (25 °C) 1% solution

Code:	Pack Sizes:	Case No.:
333954	Starter Pack (handle and 6 discs)	5
333990	Refill pack 12 discs	5