

Countertop Silver Dispenser Stand

PRODUCT DESCRIPTION

Stylish dispenser stands to promote hand sanitising.

Suction cups for stability when attaching to a counter or desk top and a manual plain white dispenser are included.

SECTORS

- Office & Facility
- Healthcare
- Public Facilities
- Industrial
- Food
- Hospitality
- Education

PACK SIZES

STOCK CODE	COLOR	QTY/CASE	CASE DIMENSIONS
MNDSKSTAND	Silver	1	485 x 275 x 85 mm

FEATURES

For use with manual dispensers

Strong suction cup hold for use on countertops.

Easy to assemble with only three main parts (assembly tools included)

Optional signage to customise the header with your message or logos (template provided below)

Sturdy metal construction

Durable coating to protect against wear & tear

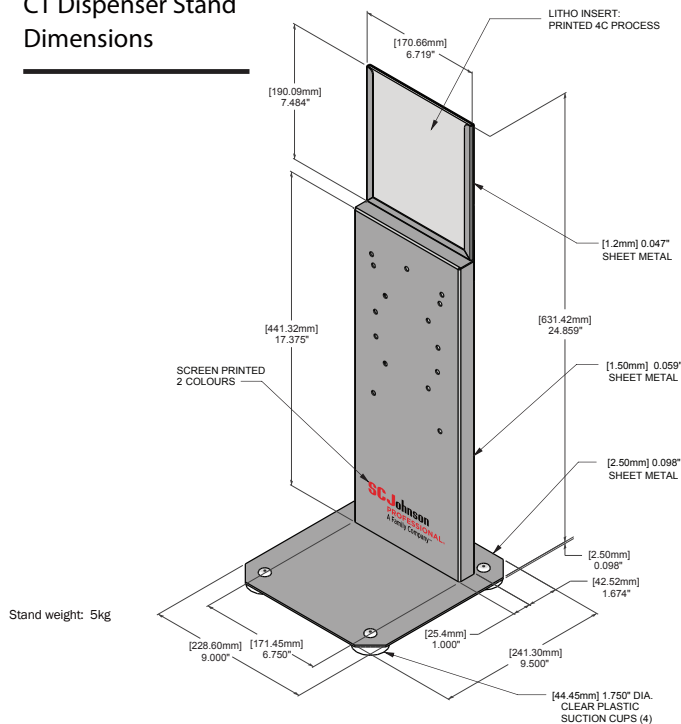
Low profile base to maximize stability

Able to be fixed permanently to flat surfaces (hardware not included)



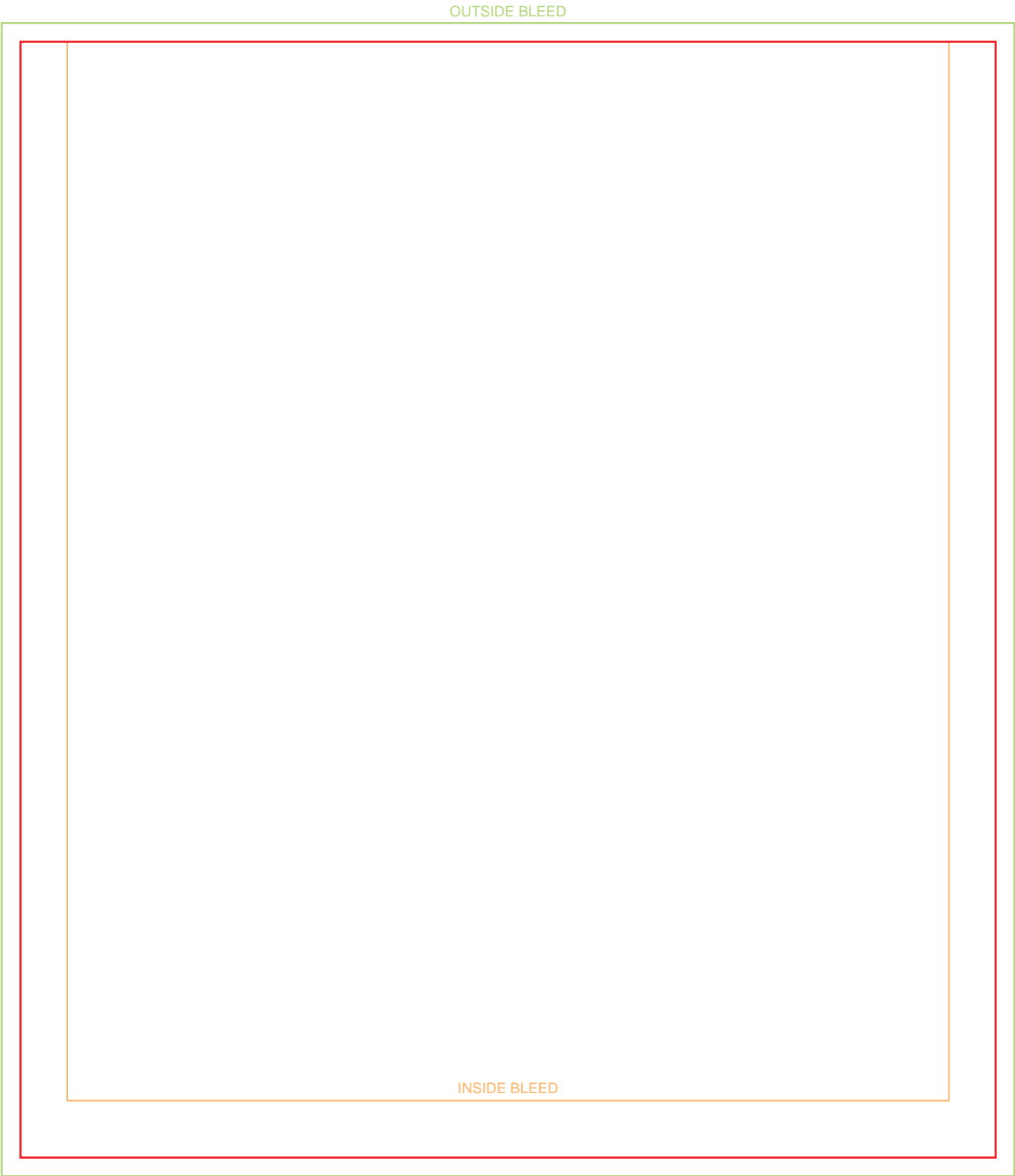
*Includes WHB1LDS Plain White Dispenser

CT Dispenser Stand Dimensions



Countertop Silver Dispenser Stand

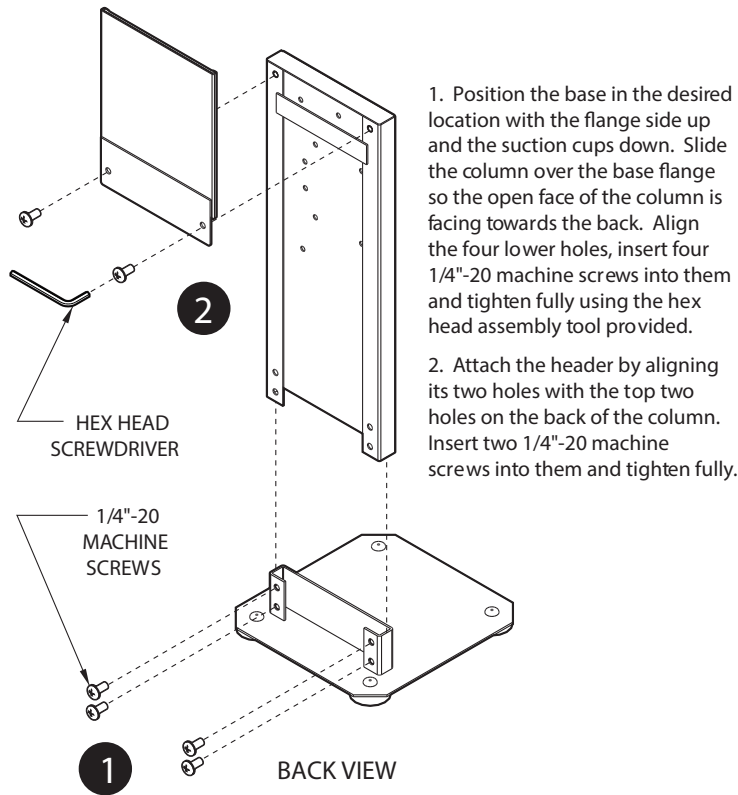
DESIGN YOUR OWN HEADER TEMPLATE



PRINT AREA	[171.45mm] 6.750" X [195.28mm] 7.688"
TRIM/DIE SIZE	[165.10mm] 6.500" X [188.93mm] 7.438"
SUBSTRATE :	[0.25mm] 0.010" GLOSS LITHO STOCK

Countertop Silver Dispenser Stand

COUNTER SANITISING STATION PART# MNDSKSTAND ASSEMBLY INSTRUCTIONS



3. Open the dispenser. Align the top four holes on the backplate with the top four holes at the top of the column. Insert four #8-32 machine screws. From the back of the unit, attach the #8-32 kep nuts and hand tighten. Fully tighten down using the phillips head assembly tool provided.

